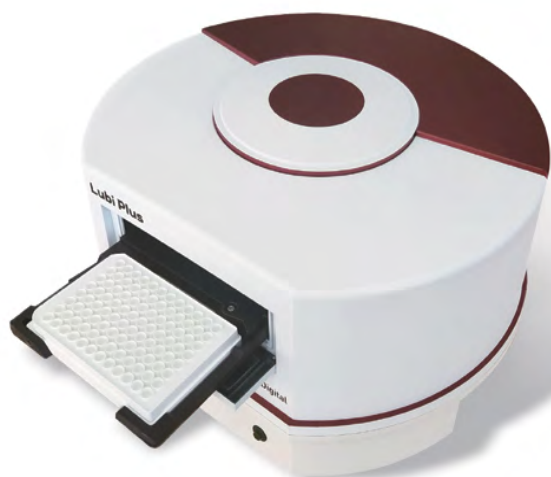


Microplate Luminometer



Lubi Plus

LuBi is luminescence measurement device that quantifies the presence of specific genes (DNA, RNA) in a sample by detecting light emitted from a chemiluminescence reaction. Its outstanding performance is attributed to the automatic dispensing function and PMT technology, while the plate adapter function enables the utilization of 6, 12, 24, 48, and 96 well microplates.

Feature

- Biomedical equipment that measures chemiluminescence/bioluminescence phenomenon (gene expression luminescence)
- Microplates of 6, 12, 24, 48, and 96 well can be used using plate adapters
- Excellent measurement sensitivity using PMT technology
- High-precision operation enables accurate and rapid diagnosis
- Automatic dispenser option, easy step-by-step protocol setup
- Various scanning and measurement modes
- Easy data analysis by easy linkage with MS Excel
- Automatically generate statistics for various experiment results

Specification

Microplate Luminometer

Limit of Detection	3×10^{-21} moles of luciferase
Linear Dynamic Range	$>1.0 \times 10^7$
Crosstalk (with White Plate)	$<3.0 \times 10^{-5}$
Detector	Photomultiplier Tube (PMT)
Spectral Response Range	350-650nm
Peak Wavelength	420nm

Power	AC85 – 264V / 0.5A / 150W
Dimension	396 x 364 x 207mm (15.6" x 14.3" x 8.1")
Weight	5.5kg (12.2lb)